

QF1200S

Quaternary Diaphragm Pumps

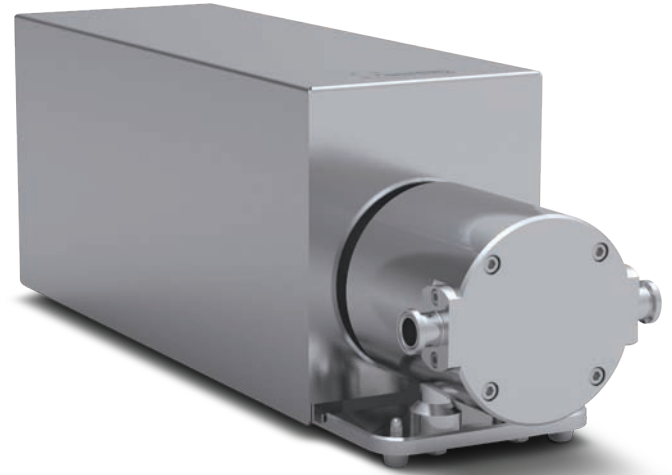
Multiple-Use – Biotech/Biopharma

Features

- 4-piston technology
- Gentle product treatment
- No particle generation
- Low pulsation
- Linear flow characteristic
- Hygienic design
- Self-priming
- Safe dry-run operation
- Also available as single-use version

Applications

- Filtration systems (TFF, etc.)
- Chromatography systems
- Feeding pump
- Virus filtration
- Sterile filtration



Technical Data

QF1200S Standard Motor	
Flow Rate Maximum:	
Eccentric Shaft 3°	800 l/h (211 gph)
Eccentric Shaft 5°	1,200 l/h (317 gph)
Flow Rate Minimum*:	
Eccentric Shaft 3°	10 l/h (2.64 gph)
Eccentric Shaft 5°	20 l/h (5.3 gph)
Pressure:	
Temperature of Fluid < 40° C (104° F)	6 bar (87 psi)
Temperature of Fluid > 40° C (104° F)	4 bar (58 psi)
Maximum Temperature:	
Fluid	80° C (176° F)
CIP	90° C (194° F)
SIP	130° C (260° F)
Autoclave	130° C (260° F)
Pump Speed Range:	
rpm	30 - 2,400
Suction Lift Dry at 1800 rpm:	
Eccentric Shaft 3°	2.5 - 3 m (8.2-9.8 ft)
Eccentric Shaft 5°	4 - 4.5 m (13.1-14.7 ft)
Volume Specifications:	
Approximated Volume per Revolution at Free Output	9.6 ml (5°) 5.8 ml (3°)
Filling Volume Without Connectors	75 ml

Other connection specifications, materials and motors available on request.

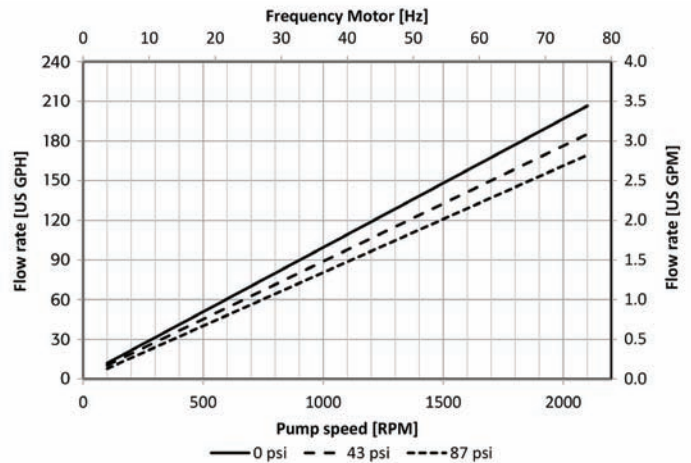
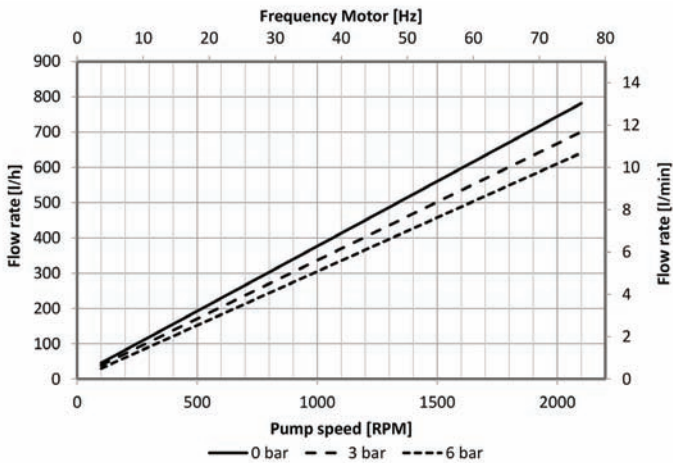
* When using pump with control box: 20 l/h (5.28 gph) and 40 l/h (10.6 gph)

QF1200S Standard Motor

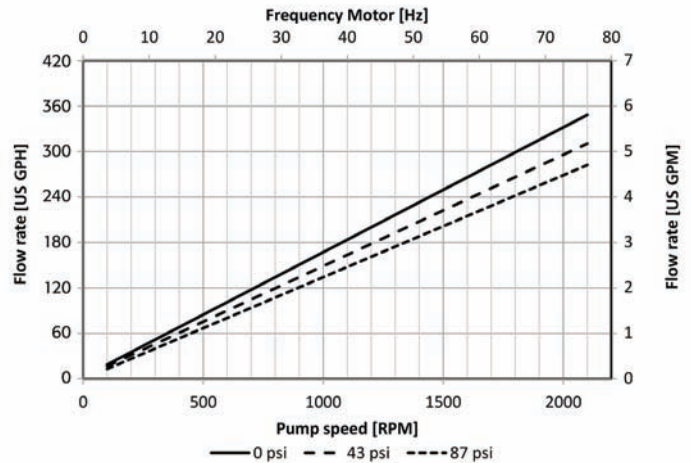
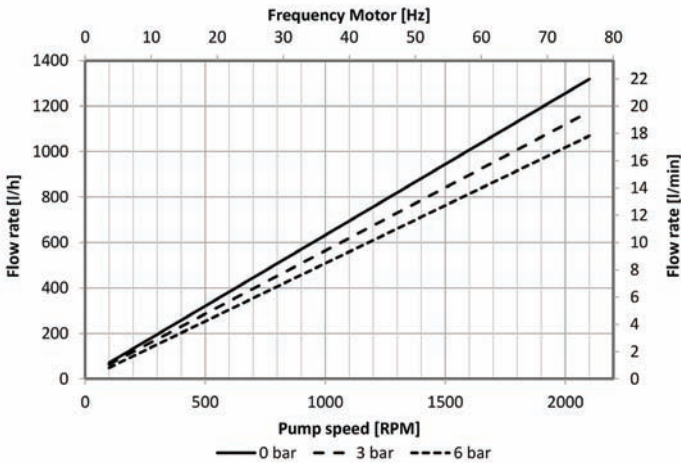
Connection Specification (Standard):	
Connectors	3/4" TC
Position of Connectors	Inline
Number of Flow Directions	4
Product Wetted Materials (Standard):	
Pump Housing	SS316L
Valve Plate	SS316L
Diaphragms	TPE
Valves	EPDM
O-rings	EPDM
Certificates/Proofs (Optional):	
Elastomere (product wetted)	USP <88> Cl. VI; FDA21CFR177; BSE/TSE Safe
Stainless Steel Parts (product wetted)	3.1; Surface Roughness; Ferrite Content
Motor (Standard):	
Rated speed	1375 min-1 (50 Hz)
Voltage	230/400 V
Power	0.37 KW
Pump Dimension with Motor and Housing:	
Length	487 mm (19.17")
Width	159 mm (6.26")
Height	210 mm (8.27")
Pump Weight with Motor and Housing:	
	24 kg (53 lb.)

Performance Charts

Eccentric Shaft: 3°



Eccentric Shaft: 5°



Depending on the selected motor/frequency drive combination, the motor frequency and the resulting pump speed might differ.

Accessories



Control Box

- Variable speed controller with integrated touch pad for manual speed control
- Configurable for remote speed control with 4-20 mA analogue input
- 230V / 50 Hz or 115 V / 60 Hz
- Hygienic 1.4301 housing, IP 54
- Easy plug & play installation



Power Box

- Plug & Play installation
- Protects system and pump from overpressure
- Configurable pressure switch setpoint
- Reset button for pump reset
- To be used with pressure switch (also available)

Diaphragm Sensor

- Sensor installed in ring drive unit
- Detection of all liquids
- Signal output to a controller, if diaphragm is ruptured

Distributed by:

ProcessHQ, Inc.
410 N. Varney Street
Burbank, CA 91502
818 861-7641
info@processHQ.com



ALMATEC Maschinenbau GmbH
Carl-Friedrich-Gauß-Str. 5
47475 Kamp-Lintfort, Germany
O: +49/2842/961-0, F: +49/2842/961-40
www.quattroflow.com
info@almatec.de

QF1200S © 2014 ALMATEC

Almatec reserves the right to modify the information and illustrations contained in this document without prior notice. This is a non-contractual document.